

T100 Series

Toggle Switches

SPECIFICATIONS

CONTACT RATING : Dependent upon contact material See page 7.

ELECTRICAL LIFE : 50,000 make-and-break cycles at full load.

CONTACT RESISTANCE : 10mΩ max. initial @ 2-4 VDC. 100 mA for both silver and gold plated contacts.

INSULATION RESISTANCE : 1,000 MΩ min.

DIELECTRIC STRENGTH : 1,000 V RMS min. @ sea level.

OPERATING TEMPERATURE : -30 C° to 130 C°.

MATERIALS

CASE : Diallyl phthalate (DAP)(UL94V-0).

ACTUATOR : Brass, chrome plated.

BUSHING : Brass, nickel plated.

HOUSING : Stainless steel.

SWITCH SUPPORT : Brass,tin plated.

TERMINAL/CONTACT : Silver or gold plated. See page 7.

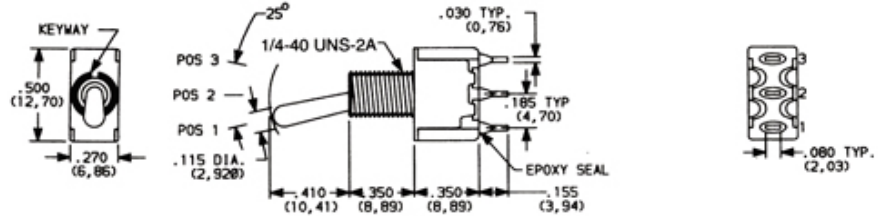
TERMINAL SEAL : Epoxy

NO. POLES	MODEL NO.	SWITCH FUNCTION			CONNECTED TERMINALS/SCHEMATIC		
		POS.1	POS.2	POS.3	POS.1	POS.2	POS.3
SP	T100	ON	NONE	OFF			
	T101	ON	NONE	ON	2-3	OPEN	2-1
	T102	ON	NONE	MOM			
	T103	ON	OFF	ON			
	T104	MOM	OFF	MOM			
	T105	ON	OFF	MOM			
DP	T201	ON	NONE	ON			
	T202	ON	NONE	MOM	2-3,5-6	OPEN	2-1,5-4
	T203	ON	OFF	ON			
	T204	MOM	OFF	MOM			
	T205	ON	OFF	MOM			
	T206	ON	ON	ON	2-3,5-6	2-3,5-4	2-1,5-4
3P	T301	ON	NONE	ON			
	T302	ON	NONE	MOM	2-3,5-6,8-9	OPEN	2-1,5-4,8-7
	T303	ON	OFF	ON			
	T304	MOM	OFF	MOM			
	T305	ON	OFF	MOM			
	T401	ON	NONE	ON			
4P	T402	ON	NONE	MOM	2-3,5-6,8-9,11-12	OPEN	2-1,5-4,8-7,11-10
	T403	ON	OFF	ON			
	T404	MOM	OFF	MOM			
	T405	ON	OFF	MOM			
	T406	ON	ON	ON	2-3,5-6,8-9,11-12	2-3,5-4,8-9,11-10	2-1,5-4,8-7,11-10

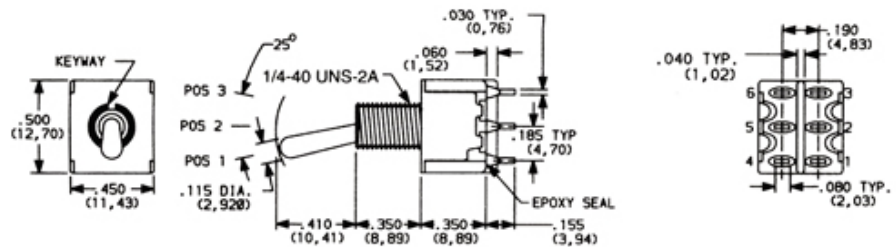
MOM=MOMENTARY

T100 Series

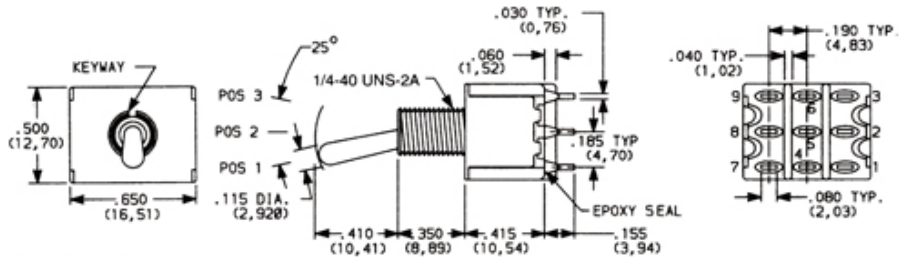
Toggle Switches



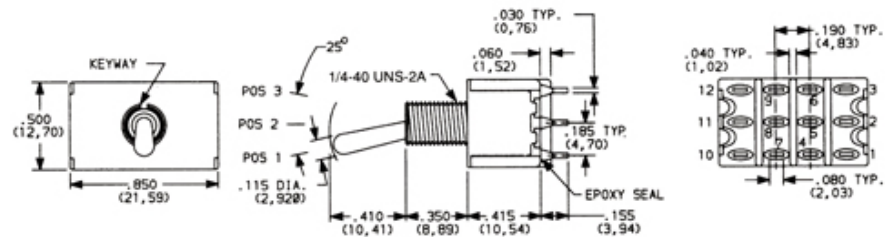
SPDT Part No. T101T1B1A1QE



DPDT Part No. T201T1B1A1QE

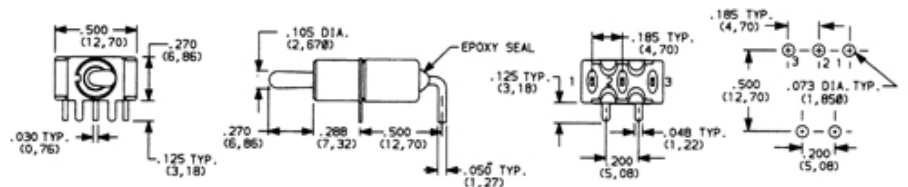


3PDT Part No. T301T1B1A1QE



4PDT Part No. T401T1B1A1QE

A3



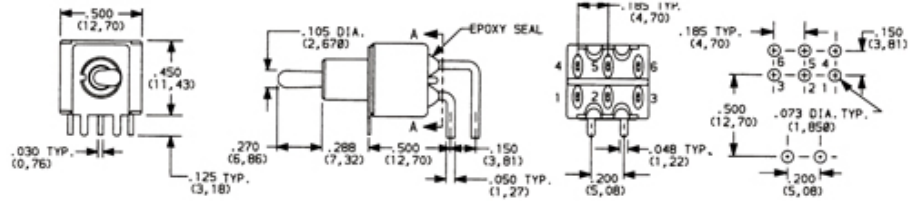
SPDT Part No. T101T2B4A3QE

P.C. MOUNTING

T100 Series

Toggle Switches

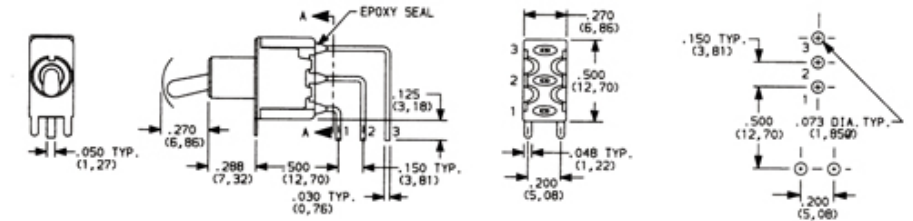
A3



P.C. MOUNTING

DPDT Part No.T201T2B4A3QE

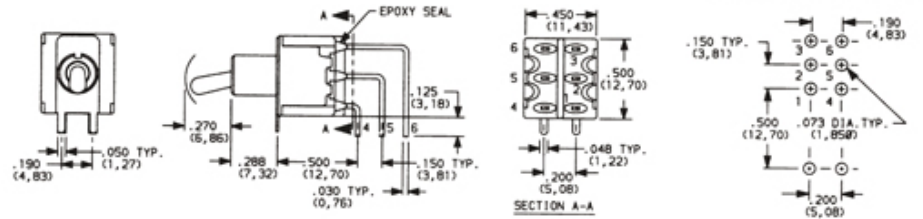
A4



P.C. MOUNTING

SPDT Part No.T101T2B4A4QE

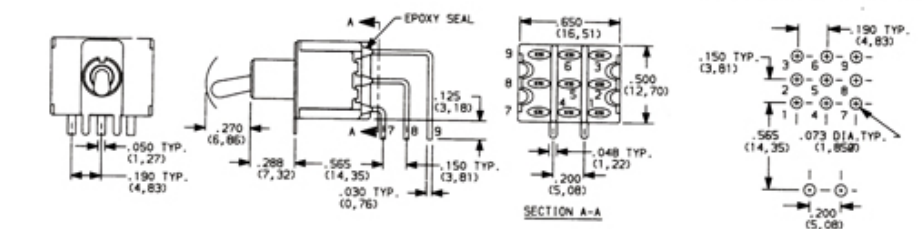
A4



P.C. MOUNTING

DPDT Part No.T201T2B4A4QE

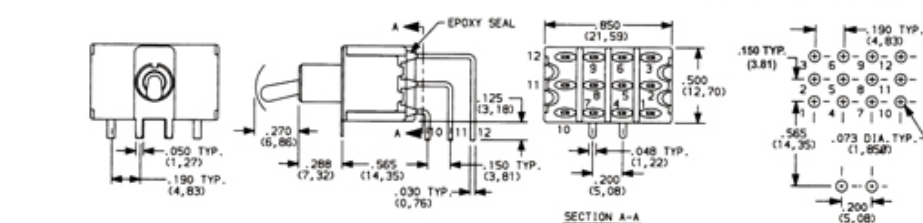
A4



P.C. MOUNTING

3PDT Part No.T301T2B4A4QE

A4



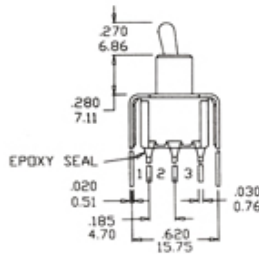
P.C. MOUNTING

4PDT Part No.T401T2B4A4QE

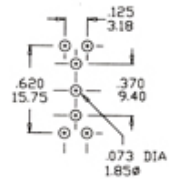
T100 Series

Toggle Switches

VS1

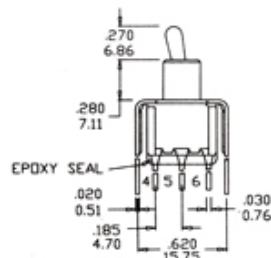


P.C. MOUNTING

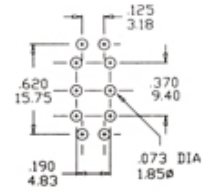


SPDT Part No. T101T2B4VS1QE

VS1

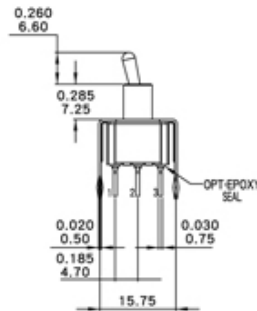


P.C. MOUNTING

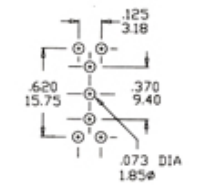


DPDT Part No. T201T2B4VS1QE

VS2

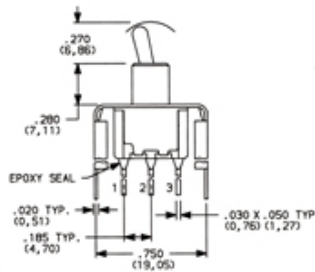


P.C. MOUNTING

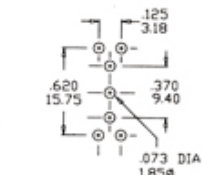


SPDT Part No. T101T2B4VS2QE

VS3



P.C. MOUNTING



SPDT Part No. T101T2B4VS3QE

ACTUATOR OPTIONS

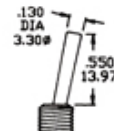
T1



T2



T3



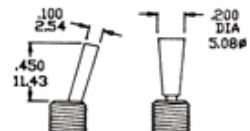
T4



T5



T6

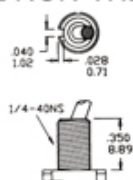


T100 Series

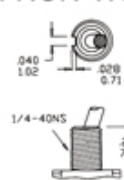
Toggle Switches

BUSHING OPTIONS

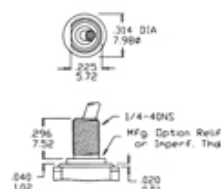
B1 THD STD
B2 NON-THD



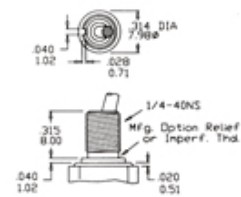
B3 THD
B4 NON-THD



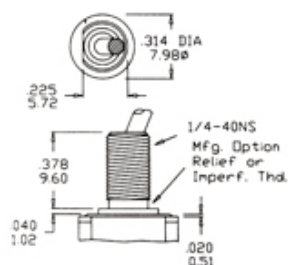
B5 HIGH TORQUE



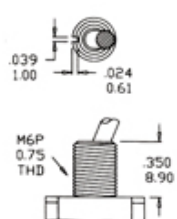
B6 HIGH TORQUE



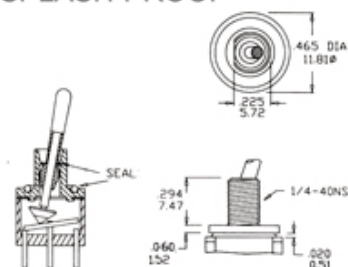
B7 LONG



B8 METRIC

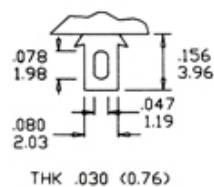


B9 SPLASH-PROOF

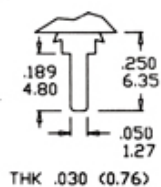


TERMINATION OPTIONS

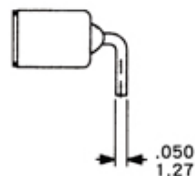
A1 STD



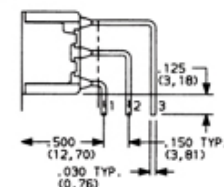
A2



A3



A4



CONTACT RATING

Q

FIXED TERMINAL : Silver plated over copper alloy

MOVING CONTACT : Silver plated over copper alloy

RATING : 5 Amps with resistive load@120VAC or 28VDC

2 Amps with resistive load@250VAC

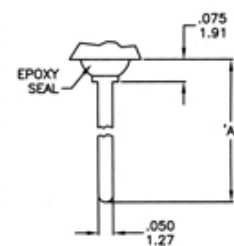
G

FIXED TERMINAL : Copper alloy with gold plated over nickel plate

MOVING CONTACT : Copper alloy with gold plated over nickel plate

RATING : 0.4 Volt-Amps(VA) max. @20V max. (AC or DC)

A5

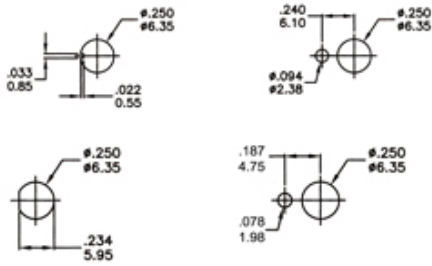


THK .030(0.76)

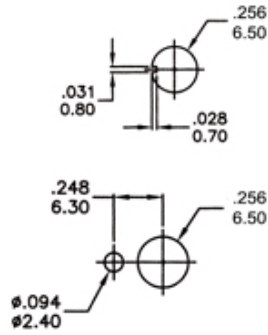
OPTION CODE	DIM. 'A'
A5-1	.700(17.80)
A5-2	.744(17.80)

PANEL MOUNTING

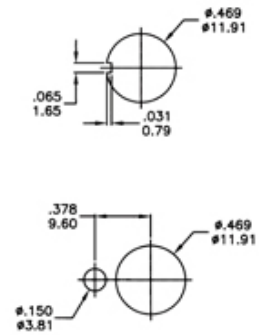
1/4 IN. BUSHING



METRIC BUSHING

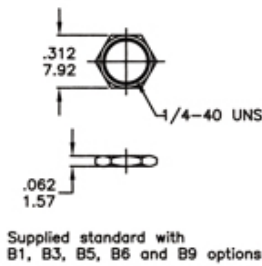


15/32 IN BUSHING

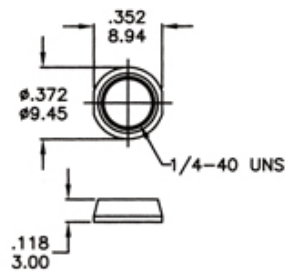


NUT

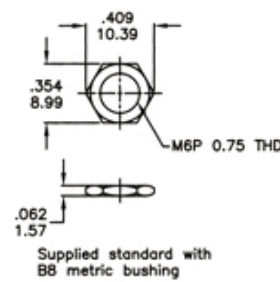
1/4 NUTS



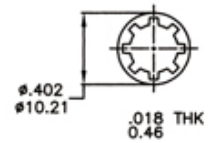
DRESS NUT



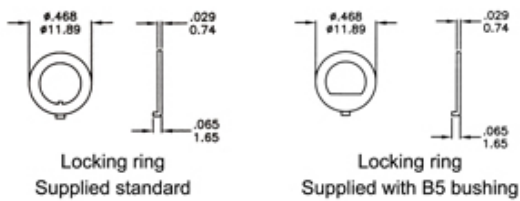
METRIC NUT



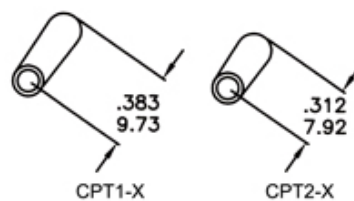
LOCK WASHER



LOCKING RING

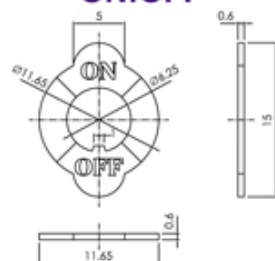


TOGGLE CAPS

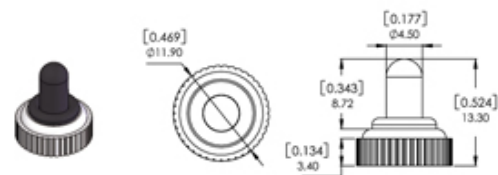


1	Black
2	Red
3	Yellow
4	White
5	Green

ON/OFF



RUBBER HOOD SEALING



HOW TO ORDER

MODEL NO.	ACTUATOR	BUSHING	TERMINATIONS	CONTACT MATERIAL	SEAL
T100 T301 T101 T302 T102 T303 T103 T304 T104 T305 T105 T401 T201 T402 T202 T403 T203 T404 T204 T405 T205 T406 T206	T1 T2 T3 T4 T5 T6	B1 B2 B3 B4 B5 B6 B7 B8 B9	A1 A2 A3 A4 A5-1 A5-2 VS1 VS2 VS3	Q=Silver G=Gold	E=EPOXY N=NO EPOXY